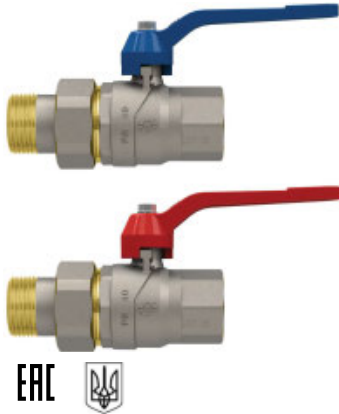
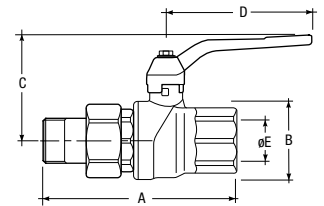


GP 2240  
EVOLUTION



Valvola a sfera Femmina-Bocchettone nichelata, con Leva alluminio verniciata.



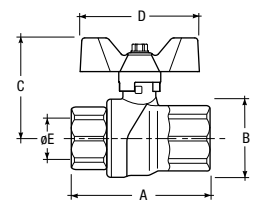
A

CODICE	Misura	A mm	øB mm	C mm	D mm	øE mm	gr	PN	Conf. pz/sc	Master pz/sc
<b>VERSIONE BLU</b>										
80005013	1/2"	82	31	49	85	15	245	50	24	96
80005035	3/4"	94	38	53	85	20	395	40	18	72
80005101	1"	109	46	63	105	25	650	30	12	48
80005115	1"1/4	125	57	69	105	32	880	25	8	32
<b>VERSIONE ROSSA</b>										
86005013	1/2"	82	31	49	85	15	245	50	24	96
86005035	3/4"	94	38	53	85	20	395	40	18	72
86005101	1"	109	46	63	105	25	650	30	12	48
86005115	1"1/4	125	57	69	105	32	880	25	8	32

GP 2240  
EVOLUTION



Valvola a sfera Femmina-Femmina nichelata, con farfalla in alluminio verniciata.



A

CODICE	Misura	A mm	øB mm	C mm	D mm	øE mm	gr	PN	Conf. pz/sc	Master pz/sc
<b>VERSIONE BLU</b>										
80001015	1/4"	45	26	42	60	10	140	50	36	144
80001039	3/8"	47	26	42	60	10	140	50	36	144
80001013	1/2"	56	31	46	60	15	175	50	36	144
80001035	3/4"	67	38	49	60	20	280	40	24	96
80001101	1"	80	46	56	65	25	455	30	12	48
80001115	1"1/4	94	57	62	65	32	660	25	8	32
<b>VERSIONE ROSSA</b>										
86001015	1/4"	45	26	42	60	10	140	50	36	144
86001039	3/8"	47	26	42	60	10	140	50	36	144
86001013	1/2"	56	31	46	60	15	175	50	36	144
86001035	3/4"	67	38	49	60	20	280	40	24	96
86001101	1"	80	46	56	65	25	455	30	12	48
86001115	1"1/4	94	57	62	65	32	660	25	8	32
<b>VERSIONE NERA</b>										
81001013	1/2"	56	31	46	60	15	175	50	36	144
81001035	3/4"	67	38	49	60	20	280	40	24	96
81001101	1"	80	46	56	65	25	455	30	12	48
81001115	1"1/4	94	57	62	65	32	660	25	8	32